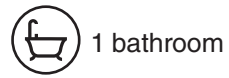


2 bedrooms



1 bathroom



✓ laundry



# Plant

67m<sup>2</sup>

A timeless classic designed home if you are looking for a compact holiday home, rental property or farm workers accommodation, this home will be a great fit.

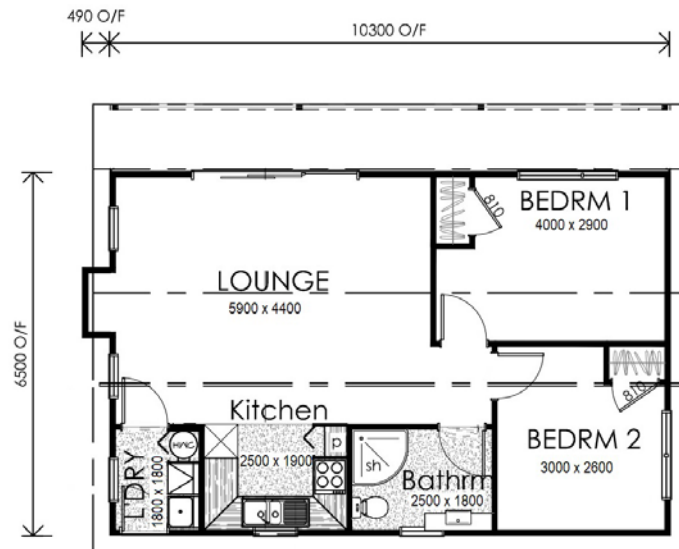
## Key Features:

- ▶ Veranda
- ▶ Open plan living
- ▶ Chimney feature



# Plant

## 67m<sup>2</sup> Specification Guide



- ▶ **Roof** Colourcote ZR8.40 Corrugate, Gable Roof, 30 Degree Pitch with attached Verandah, Colour Steel Fascia & Gutter System
- ▶ **Cladding** Fibre Cement Weather Boards
- ▶ **Windows** Powder Coated Aluminium Windows with Paint Quality 19mm Reveals. 60X12 C/W Architraves
- ▶ **Glazing** Double, Clear, Obscure Glass to Bathroom
- ▶ **External Doors** Aluminium Powder Coated
- ▶ **Floors** SG8 timber sub floor framing, 20mm Particleboard
- ▶ **Insulation** R3.6 to Ceiling, R2.6 Walls, R1.6 Under Floor

- ▶ **Wall Linings** 10mm Gib Board, Stopped and Painted\*
- ▶ **Ceilings** 13mm Gib Board, Stopped and Painted\*  
*\*EHL Colour Chart*
- ▶ **Interior Doors** T&G Grooved, Paint Quality, Hollow Core
- ▶ **Door Handles** Schlage Leonardo Handles
- ▶ **Wardrobes** Single Shelf with Hanging Rail
- ▶ **Floor Coverings** Carpet in the Lounge and Bedrooms on New Underlay. Stock Vinyl in the Kitchen, Laundry and Bathroom
- ▶ **Kitchen** 18mm MDF Melteca/Melamine with 2mm PVC
  - Colour** Standard Colours
  - Handles** Standard Handles
  - Bowl** Single Bowl
  - Range** Freestanding Electric Range
  - Range Hood** Electric Ducted to Soffit
  - Faucet** Single Lever Mixer
- ▶ **Laundry** Super tub with Taps
- ▶ **Bathroom**
  - Vanity** 900mm Vanity with Single Lever Mixer
  - Mirror** 900mm X 750mm Fixed Wall Mirror
  - Extractor Fan** Electric Operated Ceiling Fan with 2 Heat Lamps
  - Toilet** Panpak with 'S' Trap Waste
  - Shower** 900mm X 900mm with Glass Door, Single Lever Mixer with Slide Shower
- ▶ **H.W.C** 160 Litre Mains Pressure Cylinder
- ▶ **Electrical** 10 Double Plugs, 2 Single Plugs, 1 Shaver Plug to Bathroom, Down Lights Throughout, 2 Exterior Lights
- ▶ **TV Connection** 1 T.V Point
- ▶ **Telephone** 1 Jack Point
- ▶ **Smoke Alarm** 2 Battery Powered Smoke Alarms
- ▶ **Exterior Taps** 1 Brass