



3 bedrooms



1 bathroom



1 ensuite



✓ laundry



Lennon

103m²

A cleverly designed home. No hallways makes for a lot of features packed into a compact size. Whether you're looking for a family home, holiday home, rental property or a farm workers accommodation, this home works very well.

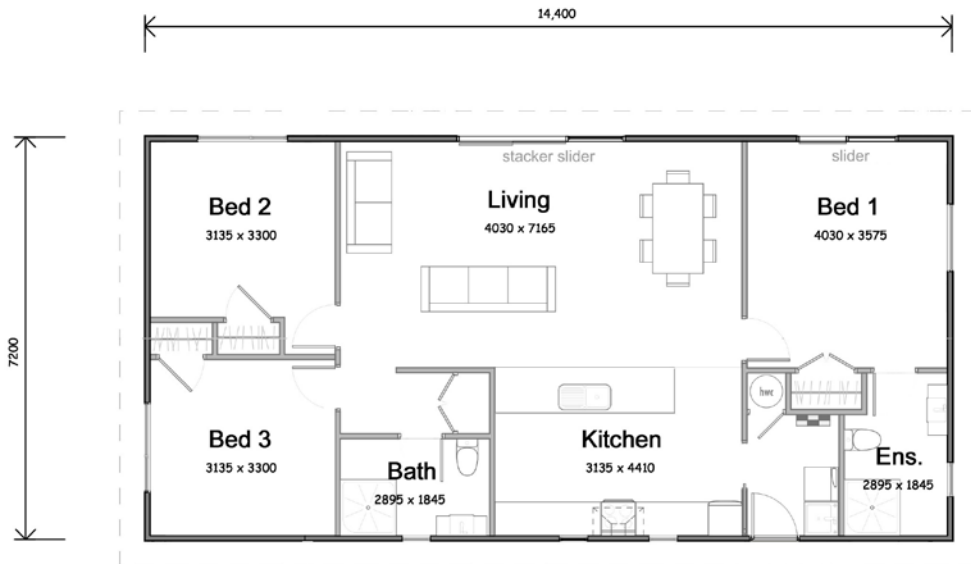
Key Features:

- ▶ Boxed corners and window sills
- ▶ Open plan living
- ▶ Ensuite



Lennon

103m² Specification Guide



- ▶ **Roof** Colourcote ZR8.40 Corrugate, gable Roof, 20 Degree Pitch, Colour Steel Fascia & Gutter System
- ▶ **Cladding** Fibre Cement Weather Boards
- ▶ **Windows** Powder Coated Aluminium Windows with Paint Quality 19mm Reveals. 60X12 C/W Architraves
- ▶ **Glazing** Double, Clear, Obscure Glass to Bathroom and Ensuite
- ▶ **External Doors** Aluminium Powder Coated
- ▶ **Floors** SG8 timber sub floor framing, 20mm Particleboard
- ▶ **Insulation** R3.6 to Ceiling, R2.6 Walls, R1.6 Under Floor

- ▶ **Wall Linings** 10mm Gib Board, Stopped and Painted*
- ▶ **Ceilings** 13mm Gib Board, Stopped and Painted*
**EHL Colour Chart*
- ▶ **Interior Doors** Flush Panel, Paint Quality Hollow Core
- ▶ **Door Handles** Schlage Leonardo Handles
- ▶ **Wardrobes** Single Shelf with Hanging Rail
- ▶ **Floor Coverings** Carpet in the Living, Dining and Bedrooms on New Underlay. Stock Vinyl in the Kitchen, Laundry, Ensuite and Bathroom
- ▶ **Kitchen** 18mm MDF Melteca/Melamine with 2mm PVC
 - Colour** Standard Colours
 - Handles** Standard Handles
 - Bowl** Single Bowl
 - Range** Inbuilt Electric Range
 - Cooktop** Ceramic
 - Range Hood** Electric Ducted to Soffit
 - Faucet** Single Lever Mixer
- ▶ **Toilet** Panpak with 'S' Trap Waste
- ▶ **Laundry** Super tub with Taps
- ▶ **Bathroom and Ensuite**
 - Vanity** 900mm Vanity with Single Lever Mixer
 - Mirror** 900mm X 750mm Fixed Wall Mirror
 - Extractor Fan** Electric Operated Ceiling Fan with 2 Heat Lamps.
 - Shower** 1000mm X 1000mm with Glass Door, Single Lever Mixer with Slide Shower
- ▶ **H.W.C** 180L Mains Pressure
- ▶ **Electrical** 15 Double Plugs, 1 Single Plug, 1 Shaver Plug to Bathroom & Ensuite, Down Lights Throughout, 3 Exterior Lights
- ▶ **TV Connection** 1 T.V Point
- ▶ **Telephone** 1 Jack Point
- ▶ **Smoke Alarm** 2 Battery Powered Smoke Alarms
- ▶ **Exterior Taps** 1 Brass